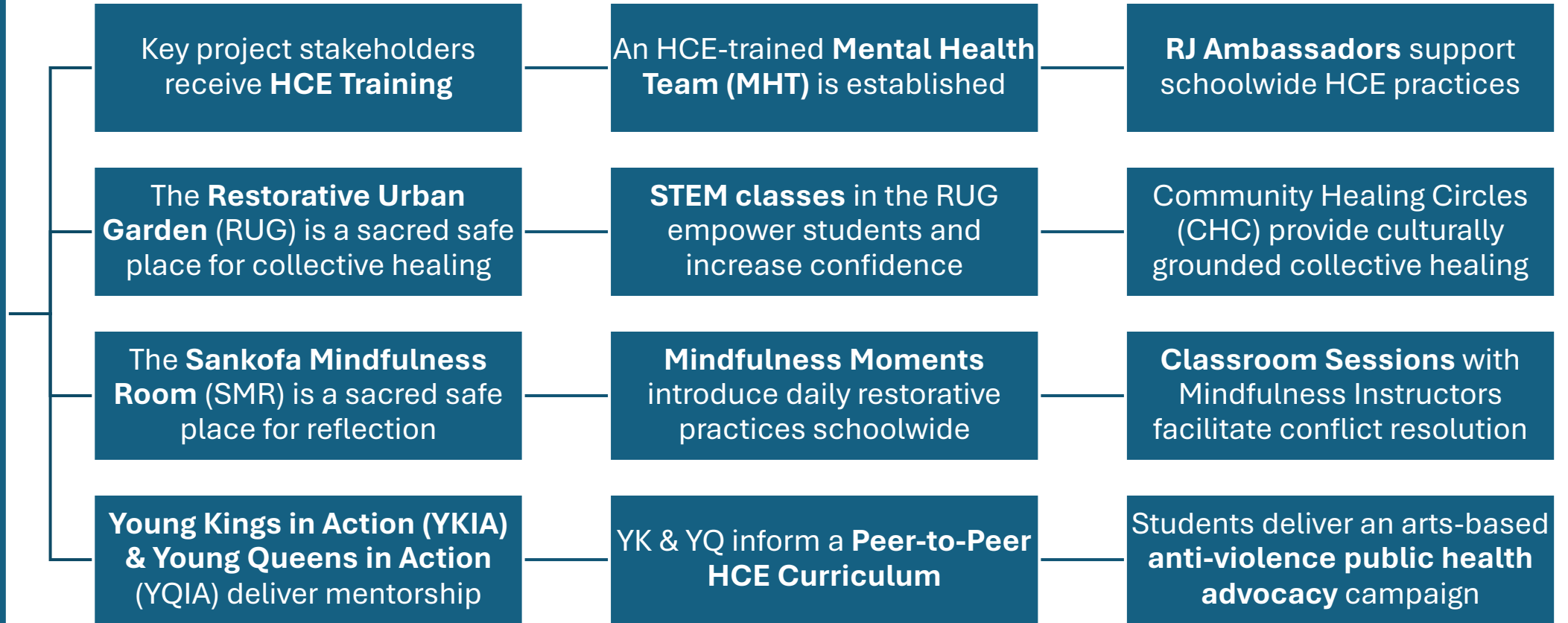
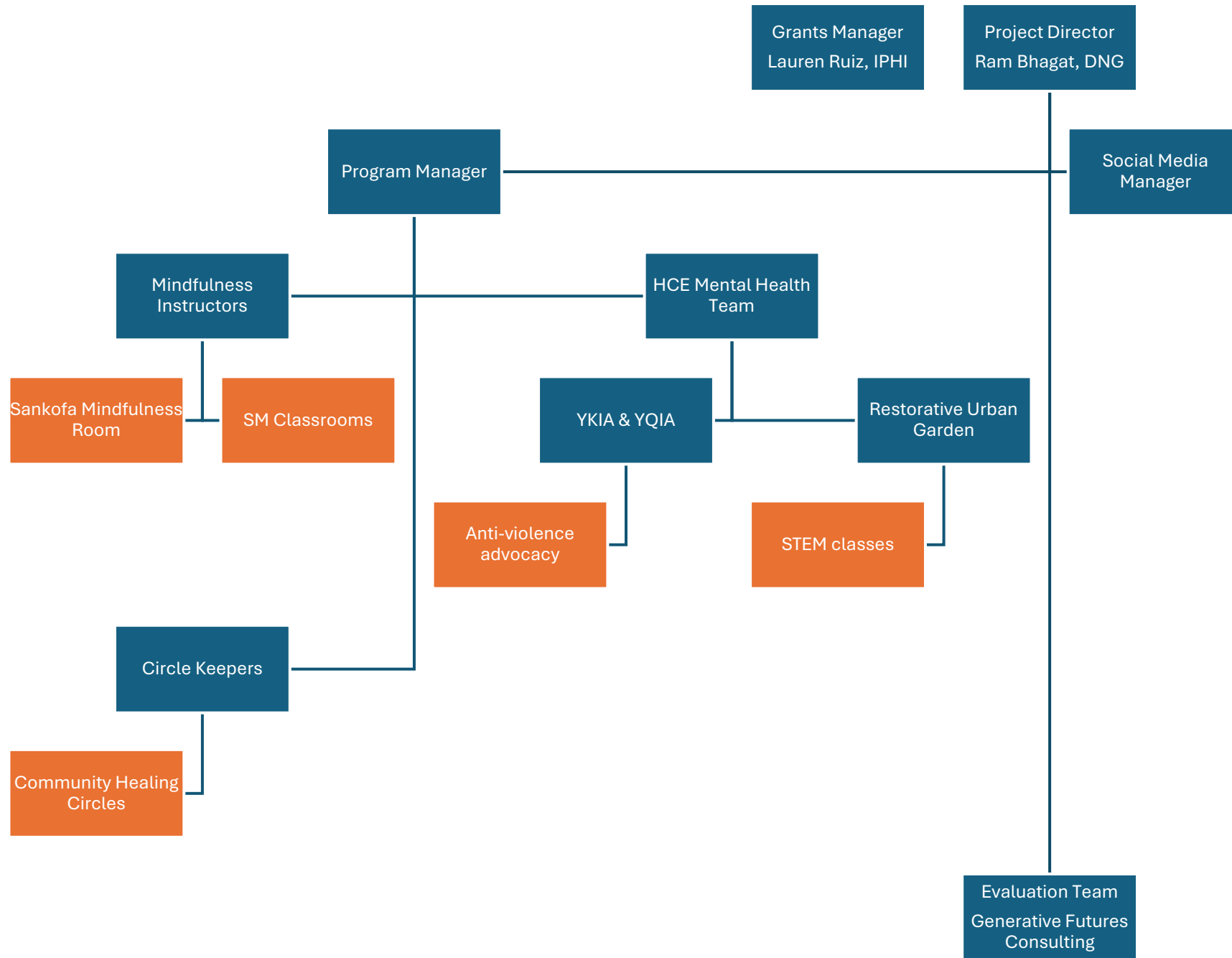
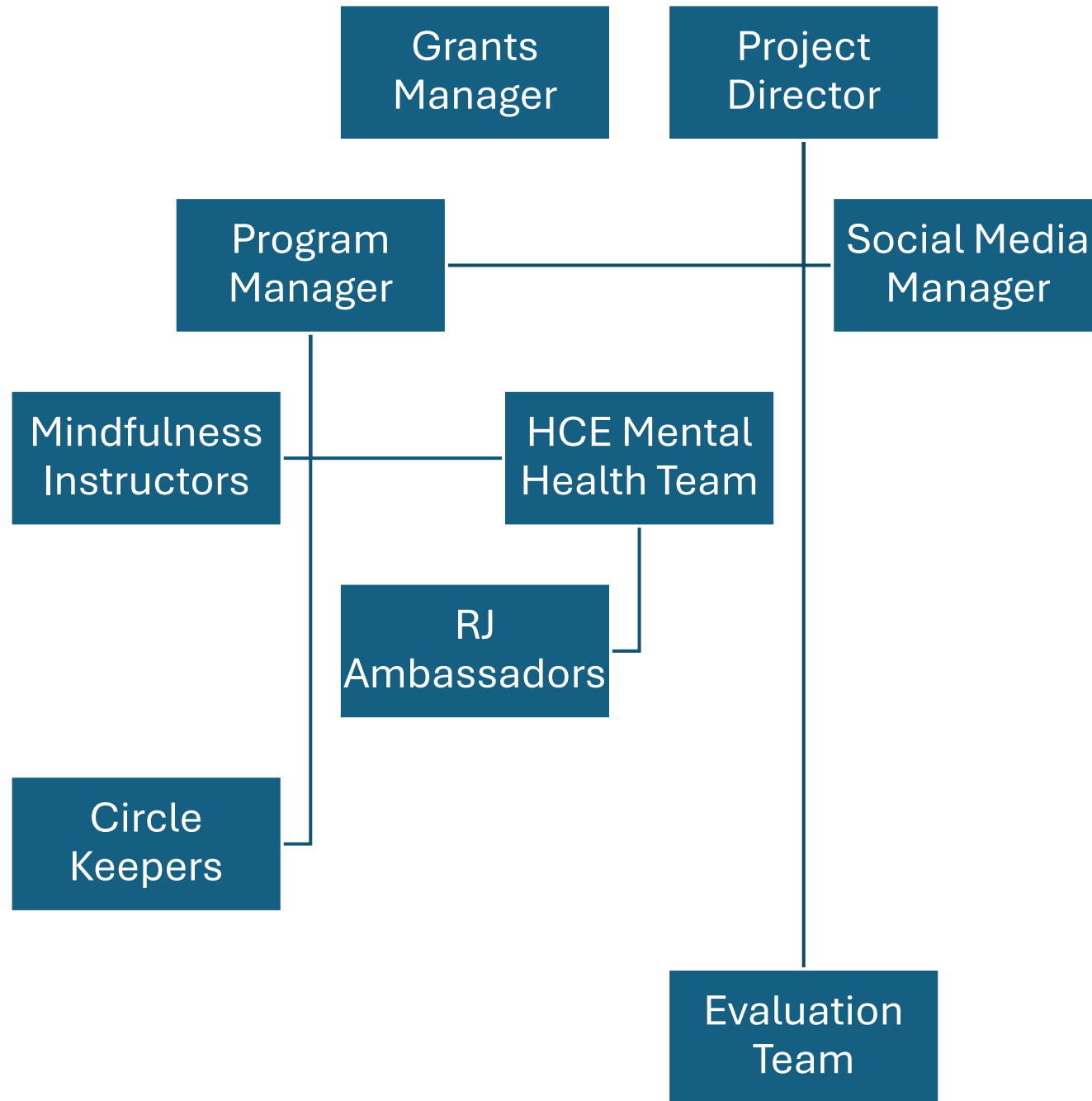


Role	Activities	Access Points	Outcomes	
<b>Students (Black &amp; Brown youth)</b>	Users of sacred safe spaces; Members of YKIA & YQIA; Anti-violence advocates	HCE practice; Peer-to-peer mentoring; Curriculum design; Public health advocacy	SMR; Classrooms; RUG; CHC; YKIA / YQIA; Anti-violence events	Root-cause solution building; M&BH improvements; Asset-driven growth
<b>Classroom (Teachers)</b>	RJ Ambassadors; HCE Learners; Adult providers	HCE training; HCE practice; Youth mentoring; Focus groups	HCE curriculum; Classroom; RUG; CHC; Focus groups	Culturally grounded healing; Healing the healers; Asset-driven mentorship
<b>School (Administrators)</b>	HCE Learners; Adult providers; Impact analysis partner	HCE training; HCE practice; Focus groups; Data administration	HCE curriculum; SMR; CHC; Focus groups	Collective healing; Culturally grounded healing; Healing the healers
<b>Community (Families &amp; neighbors)</b>	Users of sacred safe spaces; Adult providers	HCE practice	RUG; CHC; Anti-violence events	Root-cause solution building; Collective healing; Healing the healers

# Massive Resilience







# Healing Centered Engagement:

